

WASTELINE



March, 2007
City of Omaha
Mike Fahey, Mayor



Recycling, Garbage and Yardwaste Information for the Citizens of Omaha, Nebraska
Public Works Department Robert G. Stubbe, P.E., Director Environmental Quality Division

Being Beautiful is Hard Work

Have you read the article, and the letter to the editor that quotes a visitor to Omaha raving about Omaha, how it is friendly, welcoming, and clean? Whether it's a cast member from The Lion King, a College World Series fan, or a typical visitor, it's nice to hear. Most people take pride in keeping Omaha clean, but the few that don't have a great impact on our city.

Those who illegally dump debris, whether it's in an alley, on a vacant lot, in a business dumpster or at a thrift store, are committing a crime. There's no excuse for the illegal dumping. The City provides disposal services for almost everything. Most of these services are provided at no cost and those that do cost are very inexpensive. Certainly much cheaper than being caught for illegal dumping which can result in penalties of \$500, loss of driver's license for 6 months plus clean up and removal costs.

Because the City pays for solid waste services from the general revenue fund, it gives the perception that garbage service is "free." But nothing could be further from the truth. While the City is very proud that we are able to provide weekly garbage, recycling and yardwaste collection at a very economical per household price of \$102 per year, the overall cost for this service is over \$13 million per year.

Besides the weekly collection service that Omaha provides, the City also



funds Spring Clean Up, a low cost bulky item drop-off site and operates UnderTheSink the metro area household chemical collection facility. Those programs are described completely on the back of this issue.

To clean up after the uncaring citizens who dump items on streets, public property, or vacant lots, two city departments are called into action. Both the Parks and Recreation Department and the Public Works Department have crews dedicated to cleaning up the mess that others have created.

Omaha also has the Offender Work Program that performs litter clean up throughout the City, and the Graffiti Abatement Program to clean up this visual trash.

Citizens who hire individuals to haul away debris should make sure that the items are disposed of properly. It is believed that much of the illegal dumping that is occurring comes from people who were actually paid to dispose of the items. **O!**

A Neighbor's Code of Ethics

- Feel good about your own property; respect your neighbors.
- Inside your home is your space. The space outside your home is shared with your neighbors.
- Your trees should grow tall. Your grass should not.
- Make trash and junk short-lived. They do not get better with age.
- Litter is like a smudge on your face. Clean it.
- Your home is attached to the ground. The ground is part of the city. The city has a right to set ground rules. Follow the rules.
- You do not have to live with your neighbors, just next to them. Make it a comfortable relationship.
- "Hi" is only a two-letter word. Easy to say. Nice to hear.
- Control your pets. Your neighbor will appreciate that extra bit of work.
- Take pride in your neighborhood. It will feel right.

Copyright (c) 1991 by Jim Thompson, Omaha, NE, Keep Omaha Beautiful Inc.

Favor de llamar al 444-5238 si tiene alguna duda sobre el sistema de colección de basura en Omaha.

PRESORTED
STANDARD
US POSTAGE
PAID
PERMIT NO. 1086
OMAHA, NE

House Numbers Required

Having house numbers is a public safety issue when the police or fire department is responding to an emergency or apprehending a suspect.

Easily visible house numbers also aid Deffenbaugh in completing their collection rounds and responding to collection problems. In August, the Omaha City Council added a provision to the Municipal Code that requires house numbers on the alley side of houses in addition to the street side.



House numbers should be large enough to be seen from the street or alley, and in a contrasting color from

their background. Illuminated numbers that can be seen at night are an added benefit. Numbers that have been painted over should be replaced.

If your home is on an alley, please add house numbers to the alley side of your home and assist neighbors who may have difficulty completing this task. Every home should examine their house numbers to see if they will serve them in an emergency. Remember, the life or home you save could be your own. **O!**

**Upcoming Solid Waste Collection Holiday:
Collection delayed one day the week of Memorial Day, May 28, 2007**

Wasteline is using and developing a new mailing list and we need your help. Please e-mail wasteline@ci.omaha.ne.us if you received Wasteline by mail but don't receive Omaha solid waste services. If you know of an address that we missed, please e-mail us that information too.





Recycling

Place Materials
Out in Green Bin

All Clean Paper In a Paper Sack or Small
Cardboard Box
(Do not use plastic bags)

Includes: Most all clean paper. Things
like:

- | | |
|-----------------|-------------------|
| Magazines | Greeting Cards |
| Newspaper | School Paper |
| Detergent Boxes | Phonebooks |
| Paperback Books | Junkmail |
| Catalogues | Wrapping Paper |
| Cereal Boxes | Paper Egg Cartons |

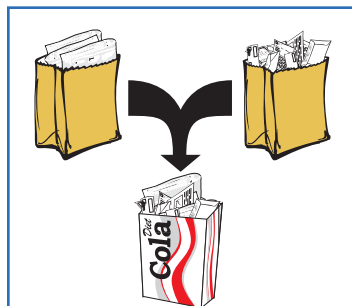


Lay sack or box either inside bin, on top of
bin, or next to your bin with opening
facing away from wind.

Corrugated cardboard. Break down flat
and place under bin. For lots of boxes,
fold and stuff multiple boxes into one box.
Set out next to recycling bin.

NO! Do not include: Any soiled paper or
these non-recyclable items:

- | | |
|--------------|-----------------|
| Pizza Boxes | Hardbound Books |
| Milk Cartons | Rubber Bands |
| Styrofoam | Paper Plates |
| Juice Boxes | Plastic Bags |
| Tissue Paper | |



All recyclable paper
may go into the same
paper sack or a small
cardboard box.
Newspapers don't
need to be kept separate.

Containers Loose in the bin
(Not in plastic bags)

Aluminum cans & Steel (tin) cans,
including empty aerosol cans, empty and
dry paint cans. Please don't flatten
aluminum cans.

Tip: Place end of food cans inside can and
crimp closed.

Plastic bottles marked PETE, including:
Bottles that held pop, cooking oil,
mouthwash, shampoo or cleaners.

Plastic bottles, tubs or snap top containers
marked HDPE, including those that
held milk, juice, cleaners, or other food
items.

NO! Don't recycle these plastic items, no
matter what: Frozen food trays, plastic
cups, toys, cookie trays, motor oil bottles,
lawn chemical bottles, or hazardous
chemical bottles

NO! Glass bottles or jars.
(Glass may be taken to drop-off sites or
placed in garbage)

NO! Lids of any kind. Remove and throw
in garbage.



Bin Replacement

If your recycling bin becomes
damaged or lost, call 444-4500.



Recycling Drop-off Sites

Recycling glass and the occasional extra bunch of recyclables is easy. Here
are the drop-off sites that serve the city:

South East: River City Recycling
6404 South 60th Street
(Between Harrison & "Q" Streets)
Open: Monday Friday: 8AM 4:30PM
Saturday: 8AM NOON (Winter)
Monday Saturday: 8AM 4:30PM
(Spring, Summer, Fall)

North East: CARE Recycling
4420 Izard Street
Open: Monday Friday: 7AM 7PM
Weyerhaeuser Recycling
7200 North 16th Street

North West: Scrap Central
8518 Blondo Street
Open: Monday Friday: 9AM 5PM
Saturday: 9AM 3PM

South West: Firstar Fiber
10330 "I" Street
Open: Monday Friday: 7AM 7PM
Use the East driveway to Firstar.
Turn off I Street, then turn left into
the fenced parking area on your left
before you reach the guard shack.

Collection Pointers

- Place all materials at your collection point by 6AM.
- If your collection was missed, call 444-5238 after 7PM on your collection day.
- Leave a couple feet of space between your yardwaste, recyclables and garbage containers.
- Keep your garbage dry use plastic bags or trash cans with lids.
- One cap full of household ammonia per garbage container will deter animals from investigating and searching for food in your garbage.
- Use clear trash bags.

Within 5 feet of curb or alley
Collection problems: 444-5238

Garbage:
Up to 5 containers

Metal or plastic can with handles.
32-gallon, 45-pound max.



Clear plastic.
30-pounds max.
Tie shut.



Recycling:
Must use bin

No plastic bags.
No glass.
Paper in paper bag or box.
Flatten cardboard boxes.



Leave space between



Set out by 6AM

Worth Noting

Watch out Dick Tracy, Xerox Corporation is experimenting with self-erasing paper, although this paper is intended for the business world, not the world of espionage. The paper can be used repeatedly and could significantly reduce paper waste from offices. Xerox estimates that two out of every five pages

printed in the office are for short-term use only.

The image on the experimental paper gradually disappears in 16 to 24 hours. Exposure to heat immediately erases the paper. It will take years of development before the paper is available to the public or businesses. **!**

Quotes Requoted

On Spaceship Earth there are no passengers; everybody is a member of the crew. We have moved into an age in which everybody's activities affect everybody else.

Marshal McLuhan, 1911-1980
Media Critic and Author



Yardwaste

Begins the
Week of April 2 - 6

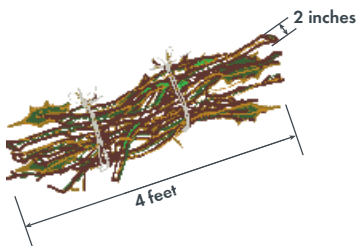
There is no limit to the amount of properly prepared yardwaste that can be collected. Place yardwaste within 5-feet of your curb and leave 2-feet of space between Yardwaste and Garbage containers. Yardwaste collection season will continue until the week of November 26 - 30, 2007.

Yes!



- ✔ Grass clippings and leaves.
- ✔ Garden waste such as fallen apples, rotted or excess vegetables and fruit.
- ✔ Trash cans up to 32 gallons and weighing up to 45 pounds, marked with a YW on both sides.
- ✔ Special yardwaste paper bags weighing up to 40 pounds.

- ✔ Unlimited number of properly prepared marked cans, paper bags or brush bundles.
- ✔ Bundles of branches and brush, tied with string or twine. Bundles may weigh up to 30 pounds.
- ✔ Branches may be up to 2 inches in diameter and 4 feet in length.



No!

- ✘ Plastic bags used in yardwaste collection.
- ✘ Mixtures of yardwaste and garbage.
- ✘ No saw dust, lumber or treated lumber/wood.
- ✘ Litter, trash or garbage.
- ✘ Whole cans of dirt or sod.
- ✘ Street sweeping sand, litter or rocks.
- ✘ Cardboard boxes of yardwaste.
- ✘ Pet waste or kitty litter.
- ✘ Branches over 2 inches in diameter.
- ✘ Branches over 4 feet long.
- ✘ Plastic twine, nylon twine or wire used to bundle brush or branches.
- ✘ Rope of any kind.
- ✘ Unbundled brush.



Garbage

Collection Missed?
Call 444-5238 after 7PM
on your collection day.

Because of state and federal laws, there are limits to the types of waste you may include in your garbage. Each household is limited to 5 properly prepared trash cans or clear bags of garbage per week.

Yes!



- ✔ Trash cans up to 32 gallons that weigh up to 45 pounds when full.
- ✔ Clear plastic bags that weigh up to 30 pounds when full.



- ✔ Up to 5 containers of garbage per week (example 2 trash cans and 3 bags).
- ✔ Place within 5 feet of curb, approved alley or other approved location.

No!

- ✘ A mixture of garbage and yardwaste.
- ✘ Rocks, dirt and concrete.
- ✘ Dead animals.
- ✘ Any liquids.
- ✘ Loose pet waste or cat litter.
- ✘ Tires, engines or other large auto parts.
- ✘ Bulky items (couches, chairs, stoves, etc.).
- ✘ Dark plastic bags that you can't see through.
- ✘ Motor oil and automotive batteries.
- ✘ Cardboard boxes (empty or full) when not in a can or bag.
- ✘ Items outside a can or clear bag.

Note: Garbage cans must be removed from the curb by 10AM the day after collection.

www.wasteline.org

2006	Garbage		Recycling		Yardwaste	
January	8,246	87%	1,223	13%		0%
February	6,647	87%	1,019	13%		0%
March	7,999	86%	1,258	14%		0%
April	7,798	55%	1,193	8%	5,100	36%
May	8,759	55%	1,323	8%	5,756	36%
June	8,966	65%	1,295	9%	3,570	26%
July	8,483	69%	1,191	10%	2,579	21%
August	9,586	65%	1,372	9%	3,828	26%
September	8,182	62%	1,219	9%	3,794	29%
October	7,946	59%	1,220	9%	4,286	32%
November	8,424	50%	1,400	8%	6,879	41%
December	7,949	83%	1,444	15%	136	1%
Total 2006	98,985	66%	15,156	10%	35,928	24%
Total 2005	98,270	65%	16,710	11%	35,391	24%

2006 in Review

Although the table above shows a reduction in recycling for 2006, it was likely due to exclusion of glass from the curbside collection program. The good news is that there was a growth in the tonnage of non-glass materials. In previous years, glass had been 10% of the recyclables collected, but the decrease in 2006 was just 5% for the year.

To encourage more recycling, the City added a new tag line for the program: Recycling...It's O! So Easy! That's the truth too! Just toss your recyclables into your recycling bin and set it out on collection day. Cardboard doesn't need to be cut down any more, just flattened. And paper doesn't need

to be sorted at all, just place all paper items in a paper bag to control litter.

Omaha's recycling program generated \$638,533 in revenue for 16,710 tons of material in 2006, an increase in revenue of \$11,718. Those are big numbers, so to bring it down to a household scale, the revenue equates to just over two cents per pound. Even at two cents a pound, you can make a big impact: the Qwest Dex telephone directory weighs about five pounds, so when recycled it equals a dime for the City. If the directory is placed in the garbage, the cost to dispose of it in the landfill is a nickel.

You can make a big impact Omaha. Just recycle!



Omaha's Premium Quality Compost

Oma-Gro is a natural compost product made exclusively of grass clippings, leaves and ground wood.

www.omagro.com

Ask for **Oma-Gro** at your favorite garden supply store or buy it direct from the production facility!

City of Omaha Composting Facility
(402) 444-6665
15705 Harlan Lewis Road
Bellevue, NE 68123-5728

The Incredible Bulk



the city limits of Omaha. The City has a contract with River City Recycling to receive bulky waste at subsidized prices. There is no city program for collecting bulky items from households since these materials are prohibited from Omahas regular collection.

Limitations & Requirements

Omahas regular garbage collection limits the amount, weight, and size of individual items collected each week, but running a household can create garbage that exceeds these limits. What to do? Sometimes the answer is easy, like cutting a big item down to a size that will fit in a trash can or clear plastic bag. But furniture and appliances can't easily be cut down to size.

One option for appliances would be to ask the store delivering your new appliance if they can take away the old one. There's usually a small fee for this service, but it's well worth it. Another option, for appliances that still work or furniture in usable condition, is to have a garage sale, advertise the item in the paper, or donate it to a charity.

The last option is to use Omahas bulky material disposal program, which is offered to all residents within

To prevent abuse of this program, there are these limitations:

- ♻️ Each Omaha residence is limited to one 4-part coupon per calendar year
- ♻️ Bulky items must be delivered to River City Recycling.
- ♻️ Drive your personal vehicle or bring the registration from your personal vehicle to show you are a resident of the City of Omaha.
- ♻️ Your driver's license is also required.

Your Cost for Bulky Item Disposal

- ♻️ The resident pays a \$7.00 administrative charge and obtains a 4-part coupon.
- ♻️ Coupons may be used immediately.

SMALL LOADS: 4 deliveries (one coupon for each) from automobiles and passenger vans (not to exceed 2 cubic yards).

LARGE LOADS: 2 deliveries (2 coupons for each) from pickup trucks, cargo vans or trailers (not to exceed 5 cubic yards each).

EXTRA LARGE LOADS: For car, truck, or trailer loads exceeding these limitations, River City Recycling charges \$6.00 per additional cubic yard.

HEAVY WEIGHT LOADS: For loads in excess of 1,750 lbs., River City Recycling charges \$15.00 per additional 1,000 lbs.

REGULATED MATERIALS: There is a \$10 per item surcharge for Freon-containing devices (ex. air conditioner, refrigerator, freezer)

Excluded Materials

- Yardwaste†
- Limbs†
- Branches†
- Tree Debris†
- Tires†
- Concrete†
- Rock†
- Hazardous Material
- Liquids
- Manure
- Dead Animals
- Animal Bedding
- Railroad Ties



†The items marked (†) are excluded from the City's bulky material program, however River City Recycling will accept these materials for a fee that is not subsidized by the City. Call River City Recycling, 731-0414, if you have questions about what they will accept, and the cost of disposal.



Bulky Item Disposal Location

River City Recycling
6404 South 60th Street
60th Street Between Q and Harrison

Bulky Disposal Operating Hours

Spring, Summer, Fall	Monday-Saturday	8am-4:30pm
Winter	Monday-Friday	8am-4:30pm
	Saturday	8am-Noon

Spring Clean Up April 21 to May 19

Spring Clean Up is your opportunity to dispose of bulky or difficult to dispose of items such as chairs, couches, appliances and tires. Spring Clean Up is not a disposal program for regular household garbage for which collection is provided weekly.

Spring Clean Up also offers the opportunity to dispose of large limbs and brush that would be difficult to dispose of using the City's weekly yardwaste collection.

Not every Spring Clean Up site will collect all materials. Appliances and tires will only be collected at one designated site each Clean Up Saturday. Collection sites will have vouchers available for disposal of tree limbs and brush on Clean Up Saturdays.

The Spring Clean Up program is a joint effort of Keep Omaha Beautiful, Inc., and the City of Omaha. But Spring Clean Up wouldn't happen without the many community advocate organizations that provide the volunteers to staff the collection sites.

Spring Clean Up is open to all Omaha residents. People that utilize a Spring Clean Up site do not need to be a dues paying member of the sponsoring organization, nor do they have to pay any fees what so ever to use a Spring Clean Up site, or the limbs and brush disposal vouchers.

To find a Spring Clean Up site near you, call 444-4636. **o!**

UnderTheSink Special Waste Facility

Properly dispose of unwanted household, lawn, garden and automotive chemicals by making an appointment at UnderTheSink, 444-sink [444-7465].

There is no charge.



Sustainability It IS Easy Being Green!



Saturday,
April 21, 2007
12-6 pm
Elmwood Park

Rain Location:
Lewis & Clark Jr. High

Free Attractions:

Live music - Rock wall - Tai Chi - Children's activities
Face painting - Yoga lessons - Belly dancing lessons

Sponsored By:

Whole Foods Market, The Reader,
& The Papio Missouri NRD

Presented by the Earth Day Omaha Coalition