



City of Omaha ● Mike Fahey, Mayor ● March, 2004

WASTELINE



Recycling, Garbage and Yardwaste Information for the Citizens of Omaha, Nebraska
Public Works Department Norm Jackman, Acting Director Environmental Quality Division

Garbage & Recycling Collection Survey

CURRENTLY OMAHA PROVIDES solid waste services to the residents of Omaha at a cost of \$8.93 per household per month. The general fund, made up of property and sales tax, is the source of funds used to pay for this service. The solid waste services annual budget is \$14 million and includes:

- Residential garbage, recycling and yardwaste collection
- Recycling drop-off sites

- Neighborhood spring clean-up
- Christmas tree drop-off sites
- Bulky material drop-off site subsidy

Because the City holds a contract on behalf of all residents of Omaha, the City is able to obtain this service at substantially lower costs than that of the surrounding communities. The current contract with Deffenbaugh Industries began in 1995 and will expire in December 2005. The

services and level of service requested in the new contract will determine the program cost for providing solid waste services. Currently garbage, recycling and yardwaste collection consume 78% of the solid waste service budget.

Please give us your opinion. A survey is included in this issue of **WASTELINE**, or you may complete a survey on-line at www.wasteline.org **o!**

Yardwaste—a Growing Problem?

AS SPRING NEARS there are many choices for growing your lawn.

Yardwaste Collection Season

Deffenbaugh will begin collecting yardwaste for 2004 on April 5. Yardwaste collection will continue through the week of December 6-10. Yardwaste must be prepared properly for collection and a description of how to set out yardwaste is on the back of this issue of **WASTELINE**. The City relies on the public to not mix other materials with yardwaste so its retail product, **Oma Gro** will meet our high standards.

Lawn Chemical Management

Properly applying lawn chemicals helps protect the environment and our drinking water. Rain and sprinkler run-off from your lawn enters storm drains that lead to creeks and rivers which is a source for our drinking water. Find out more about storm water management at douglas-sarpy.unl.edu/cl.

The City's composting facility asks the public to avoid the use of Clopyralid® containing herbicides. This particular herbicide is persistent and remains in the environment for a very long time. If you use a lawn service, be sure to ask them to use products that don't contain Clopyralid.

Unwanted lawn chemicals and other household chemicals will be accepted for proper disposal at the **UnderTheSink** facility currently under construction. Sign up to be notified of the facility's opening and learn more about it at www.underthesink.org.

Pet waste

Pick up pet waste. It's the law in Omaha, but it also helps to keep our creeks and rivers clean. Pet waste should be double bagged and included with your garbage not disposed with your yardwaste.

Leave it on the Lawn

Leave grass clippings on your lawn. It's your best and easiest choice. Grass clippings don't cause thatch, so using good lawn-mowing management practices can lessen your work, make a healthier lawn, reduce the water needed, and reduce the "waste" generated from your lawn. A brochure entitled *Bag no More* explains this lawn-mowing program and is available at www.wasteline.org, and from the Douglas/Sarpy Cooperative Extension Service.

Remember to buy **Oma Gro!** Visit www.omagro.com for application rates, a listing of retailers and details about buying **Oma Gro** direct from the production facility. **o!**

Yardwaste Collection resumes April 5, 2004

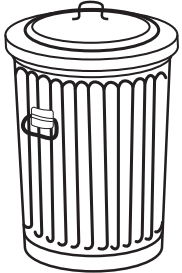


Garbage

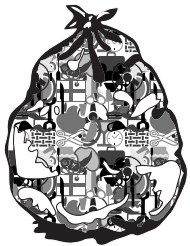
Collection Missed?
Call 444-5238 after 7pm on your collection day.

Because of state and federal mandates, there are limits to the types of waste that you may include in your garbage. Each household is limited to 5 properly prepared trash cans or clear bags of garbage per week.

Yes!



- ✔ Trash cans up to 32 gallons and weighing up to 45 pounds when full.
- ✔ Clear plastic bags and weighing up to 30 pounds when full.
- ✔ Up to five containers of trash per week (example 2 trash cans and 3 bags).
- ✔ Place within 5 feet of curb, approved alley or other approved location.



Conserve Tax Dollars
Waste Less and
Recycle More!

No!

- ✘ A mixture of garbage and yardwaste.
- ✘ Rocks, dirt and concrete.
- ✘ Dead animals.
- ✘ All liquids.
- ✘ Tires, engines or other large auto parts.
- ✘ Bulky items (couches, chairs, stoves, etc.).
- ✘ Dark plastic bags that you can't see through.
- ✘ Motor oil and automotive batteries.
- ✘ Cardboard boxes (empty or full) when not in a can or bag.
- ✘ Items outside a can or bag.



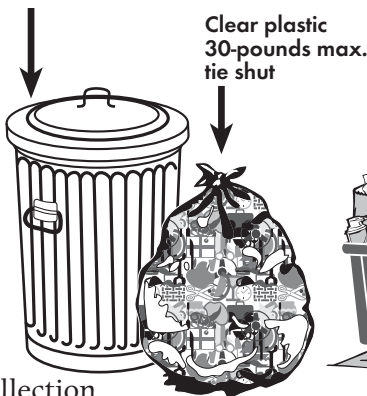
Households where all residents in the home have a medical disability or are age 70 or older may apply to use a more convenient location for garbage, yardwaste and recyclables collection. To apply, call 444-5238 from 8AM until 6PM weekdays.

- Place all materials out for collection by 6AM.
- If your collection was missed, call 444-5238 after 7PM on your collection day.

Within 5 feet of curb or alley

Garbage: 5 containers max.

32-gal. 45-pound max.



Clear plastic
30-pounds max.
tie shut



Recycling:

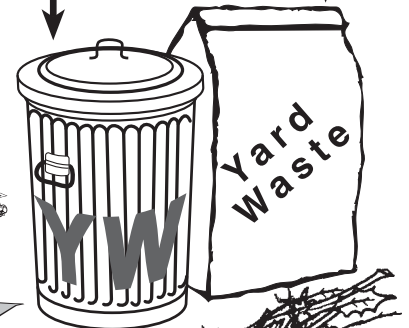
No plastic bags
Cut cardboard to 2 feet by 2 feet
Separate paper bags for newspaper & other paper

Yardwaste: No container limit

32-gal. 45-pound max.
Marked YW

Paper bags only
40-pounds max.

Growing Season Only



Bundle with string
4-feet long max.
2-inch diameter branches
30-pounds max.

Collection Pointers



Recycling

Set out by 6am

Paper sack #1—Newspaper (Do not use plastic bags)

- 👍 Includes: Coupons, advertisements, Parade section and all paper that came with the newspaper.
- 👍 Lay sack on top of bin with opening away from wind.
- 👎 **NO!** Do not include: phonebooks (see sack #2) or other paper, rubber bands, plastic bags.

Yes



Paper sack #2—Mixed Paper (Do not use plastic bags)

- 👍 Includes: Magazines, catalogues, phonebooks, cereal boxes, junkmail (including mailing labels and plastic windows), detergent boxes, greeting cards, wrapping paper, paperback books, office and school paper.
- 👍 Lay sack on top of bin with opening away from wind.
- 👎 **NO!** Do not include: pizza boxes, juice boxes, milk cartons, hardbound books, tissue paper, paper plates, or frozen food boxes.

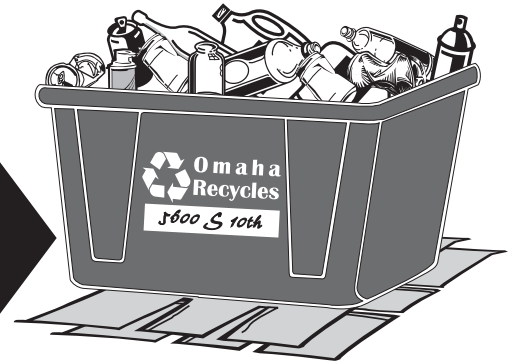
Yes



Loose in the bin—Containers (Not in plastic bags)

- 👎 **NO!** Lids of any kind. Remove and throw in garbage.
- 👍 Plastic bottles marked PETE ♻️, including: Bottles that held pop, cooking oil, mouthwash, shampoo or cleaners.
- 👎 **NO!** PETE ♻️ *not included:* deli/produce containers, frozen food trays, plastic cups, toys or cookie trays.
- 👍 Plastic bottles and tubs marked HDPE ♻️, including—bottles and tubs that held milk, juice, cleaners, margarine, whipped topping, or yogurt.
- 👎 **NO!** HDPE ♻️ *not included:* motor oil or auto product bottles, lawn chemical bottles, toys or cookie trays. No 5 gallon buckets.
- 👍 Glass bottles & jars.
- 👍 Aluminum cans & Steel (tin) cans, including—empty aerosol cans, empty and dry paint cans. *Tip: Place end of food cans inside can and crimp closed.*
- 👍 Corrugated cardboard. Flatten. Cut to 2 feet by 2 feet. Place in bin or on ground under bin.

Yes

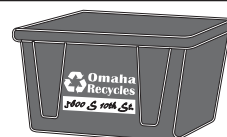


Stomp 'em flat!

Remove Lids!



Discard lids in garbage.



If your recycling bin is missing or damaged, call 444-5238.



WASTELINE

Omaha Public Works—Environmental Quality Division
5600 S. 10TH St.
Omaha, NE 68107-3501
www.wasteline.org

PRESORTED
STANDARD
US POSTAGE
PAID
PERMIT NO. 1116
OMAHA, NE

**Yardwaste collection resumes
week of April 5-9, 2004**



Keep America Going, Recycle!

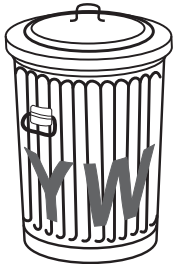


Yardwaste

**Yardwaste Collection
resumes week of April
5-9, 2004**

There is no limit to the amount of properly prepared yardwaste that will be collected. Leave 2 feet of space between Yardwaste and Garbage containers. Yardwaste collection season will end the week of December 6-10, 2004. During the winter months, yardwaste is not collected—separately or with garbage.

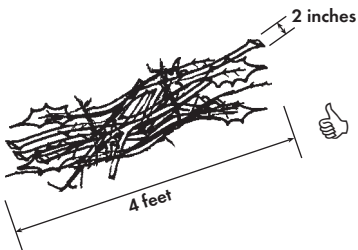
Yes!



- Grass clippings and leaves.
- Garden waste such as fallen apples, rotted or excess vegetables and fruit.
- Trash cans up to 32 gallons and weighing up to 45 pounds, marked with a **YW** on both sides.



- Special yardwaste paper bags weighing up to 40 pounds.
- Unlimited number of properly prepared marked cans, paper bags or brush bundles.



- Bundles of branches and brush, tied with string or twine. Bundles may weigh up to 30 pounds.
- Branches may be up to 2 inches in diameter and 4 feet in length.

No!

- Plastic bags used in yardwaste collection.
- Mixtures of yardwaste and garbage.
- No saw dust, lumber or treated lumber/wood.
- Litter, trash or garbage.
- Whole cans of dirt or sod.
- Street sweeping sand, litter or rocks.
- Cardboard boxes of yardwaste.
- Pet manure or kitty litter.
- Branches over 2 inches in diameter.
- Branches over 4 feet long.
- Plastic twine, nylon twine or wire used to bundle brush or branches.
- Rope of any kind.
- Unbundled brush.



Omaha Solid Waste Services Survey

Please complete and return this short survey. The survey can be completed on-line at www.wasteline.org/survey.htm.

Before completing this survey, please read the article on the cover of this issue of **WASTELINE**. For each response, circle the number, word, or icon that most directly reflects your answer.

1. Please rate your level of satisfaction of each service, in relationship to the cost (*circle one for each item*)

weekly garbage collection	☺	☹	⊗	Unknown
weekly recycling collection	☺	☹	⊗	Unknown
weekly yardwaste collection	☺	☹	⊗	Unknown
contractor response to reported problems	☺	☹	⊗	Unknown
empty containers returned to setout location	☺	☹	⊗	Unknown
area clean/litter free after collection	☺	☹	⊗	Unknown
other (specify)	☺	☹	⊗	Unknown

2. Currently each customer is allowed to set out 5 cans or bags of garbage. How many cans or bags of garbage do you typically set out each week? (*circle one*)

1 2 3 4 5 More than 5

3. How often do you recycle using your green recycling bin? (*circle one*)

Every week	Once per month
Every other week	A few times per year
Never	I don't have a green bin

4. Have you ever used any of these city sponsored solid waste services? (*check all that apply*)

- Neighborhood Spring Clean-up
- Litter containers in the Old Market and other business districts
- City-subsidized bulky item disposal at River City Recycling
- Christmas tree collection drop-off sites
- Recycling drop-off sites

5. Are you interested in attending an informational meeting to provide input on the specifications for the next solid waste services contract? (*circle one*)

Yes No
If yes, write e-mail or mailing address here:

Survey continues on the back.

Demographic Information

Zip Code: _____

Your solid waste is collected from the *(circle one)*:

Alley Curb Special Location

Your collection day is *(circle one)*:

Mon Tue Wed Thur Fri

Number of People in Household: _____

Fold here. Tape only to seal.



Place
Stamp
Here

ENVIRONMENTAL QUALITY DIV.
5600 S 10TH ST
OMAHA, NE 68107-3501

Fold here. Tape only to seal.

Cut here, then mail