

WASTELINE



December, 2006
City of Omaha
Mike Fahey, Mayor

**Christmas Tree
Collection Sites Open
December 26, 2006
until January 15, 2007**

Recycling, Garbage and Yardwaste Information for the Citizens of Omaha, Nebraska
Public Works Department Robert G. Stubbe, P.E., Director Environmental Quality Division

Recycle That Tree It's Just Natural.

As in years past, Christmas trees will not be collected as part of Omaha's garbage service. Omaha residents have two options for disposal of Christmas trees: 1) Take the tree to one of the collection sites listed in the box to the right using the same means you got it home; 2) Place the tree securely in your yard and wait for yardwaste collection to resume in April.

As usual, you must remove all lights, decorations, tree stand and the plastic bag from the tree before recycling. Flocked trees will be accepted. As an added convenience, the sites will be staffed with volunteers from the Omaha Rotary Clubs and Cooperative Extension Master Gardeners, on December 30 and 31, 2006 and January 6 and 7, 2007, from 10AM until 4PM each day.

The Christmas tree collection sites will close on Monday, January 15, 2007.

Beyond the tree...

Wrapping paper, gift catalogues and greeting cards are all-recyclable and may be recycled with your other clean paper as described in this edition of **WASTELINE**.

All the metal cans and the plastic bottles marked PETE ♻️ and HDPE ♻️ from holiday entertaining are recyclable as well. But remember, to be recycled, glass bottles must now be taken to one of the recycling drop-off sites. If you have more recyclables than your green bin will hold, simply use a small box or paper bag to hold the extra recyclables and set out with your green bin or you can take the extra recyclables to one of the recycling drop off sites.



Holiday and Yardwaste Collection Schedule for 2007

When occurring during the work week, six holidays are observed by the City's solid waste collection contractor. Following a weekday holiday, collection is delayed by one day for the remainder of that week, with Friday's collection occurring on Saturday.

Yardwaste collection begins the first Monday of April and continues through the week following Thanksgiving. During the winter

months, yardwaste is not collected separately or with garbage. Live Christmas trees are considered yardwaste and are not collected until yardwaste collection begins in the spring. Christmas Tree collection sites are provided as noted on this page.

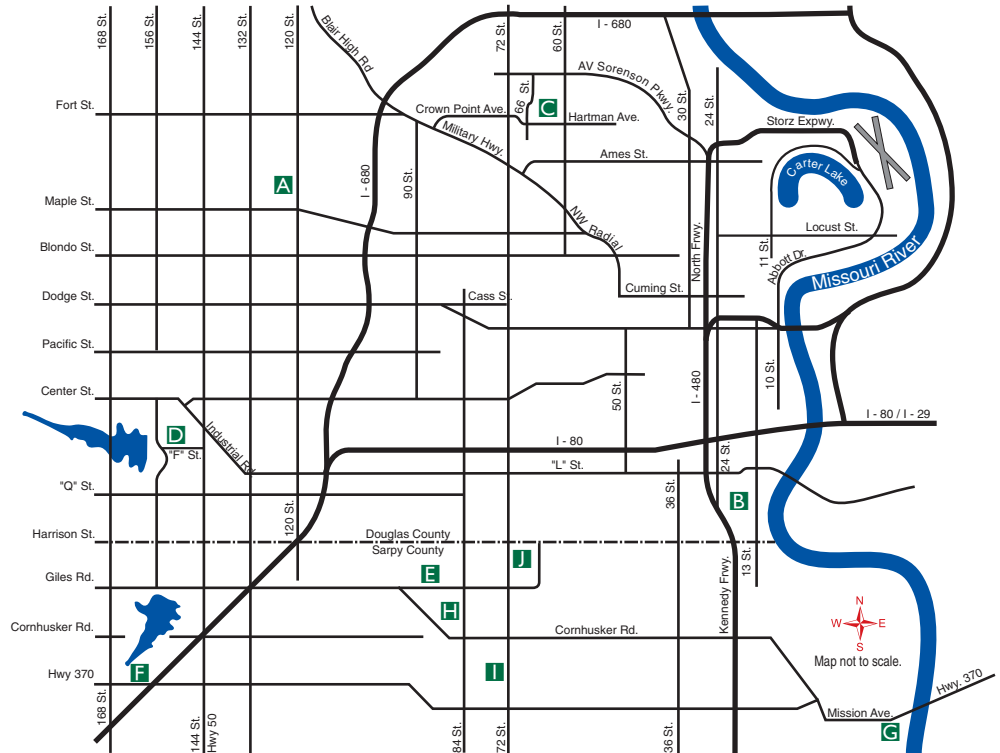
A holiday and yardwaste e-mail reminder service is offered by registering at www.wasteline.org/join.htm.



2007 Holidays & Yardwaste Collection Schedule

- ▶ Christmas Day 2006: Monday, December 25, 2006.
- ▶ New Year's Day 2007: Monday, January 1, 2007.
- ▶ First week of yardwaste collection: April 2-6, 2007
- ▶ Memorial Day: Monday, May 28, 2007
- ▶ Independence Day: Wednesday, July 4, 2007
- ▶ Labor Day: Monday, September 3, 2007
- ▶ Thanksgiving Day: Thursday, November 22, 2007
- ▶ Last week of yardwaste collection: November 26-30, 2007
- ▶ Christmas Day 2007: Tuesday, December 25, 2007.
- ▶ New Year's Day 2008: Tuesday, January 1, 2008.

Clip and Save



Christmas Tree Collection Sites

- A** Tranquility Park, North 120th Street & West Maple Road
- B** Brown Park, "U" Street between 15th & 18th Streets
- C** Orchard Park, North 66th Street & Hartman Avenue
- D** "F" Street Football Field, South 156th & "F" Streets
- E** Kelly West Park, 87th Street & Park View Boulevard
- F** Wehrspann Lake, Highway 370 entrance to the Wildlife Management Area south parking lot.
- G** Bellevue Haworth Park, Highway 370 & Payne Drive
- H** Papillion Senior Center, 1001 Limerick Road
- I** Papio Bay, 815 East Halleck Street
- J** LaVista Sports Complex, 66th Street, 2 blocks south of Harrison Street

PRESORTED
STANDARD
US POSTAGE
PAID
PERMIT NO. 1086
OMAHA, NE

Solid Waste Assistance



Special collection assistance for garbage, yardwaste and recyclables is available to households where all residents in the home have a medical disability, or are age 70 or older.

To apply, call 444-5238 from 8AM to 8PM weekdays.



Wasteline is using and developing a new mailing list and we need your help. Please e-mail wasteline@ci.omaha.ne.us if you received Wasteline by mail but don't receive Omaha solid waste services. If you know of an address that we missed, please e-mail us that information too.



WASTELINE
Omaha Public Works
Environmental Quality Division
5600 S. 10th St.
Omaha, NE 68107-3501



Recycling

Place Materials
Out in Green Bin

All Clean Paper In a Paper Sack or Small
Cardboard Box
(Do not use plastic bags)

Includes: Most all clean paper. Things
like:

- | | |
|-----------------|-------------------|
| Magazines | Greeting Cards |
| Newspaper | School Paper |
| Detergent Boxes | Phonebooks |
| Paperback Books | Junkmail |
| Catalogues | Wrapping Paper |
| Cereal Boxes | Paper Egg Cartons |

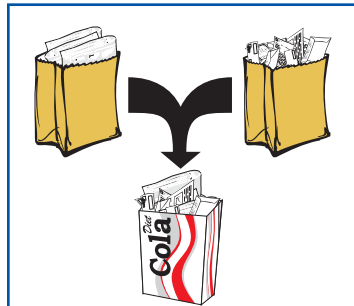


Lay sack or box either inside bin, on top
of bin, or next to your bin with opening
facing away from wind.

Corrugated cardboard. Break down flat
and place under bin. For lots of boxes,
fold and stuff multiple boxes into one box.
Set out next to recycling bin.

NO! Do not include: Any soiled paper or
these non-recyclable items:

- | | |
|--------------|-----------------|
| Pizza Boxes | Hardbound Books |
| Milk Cartons | Rubber Bands |
| Styrofoam | Paper Plates |
| Juice Boxes | Plastic Bags |
| Tissue Paper | |



All recyclable paper
may go into the same
paper sack or a small
cardboard box.
Newspapers don't
need to be kept separate.

Containers Loose in the bin
(Not in plastic bags)

Aluminum cans & Steel (tin) cans,
including empty aerosol cans, empty and
dry paint cans. Please don't flatten
aluminum cans.

Tip: Place end of food cans inside can and
crimp closed.

Plastic bottles marked PETE, including:
Bottles that held pop, cooking
oil, mouthwash, shampoo or cleaners.

Plastic bottles, tubs or snap top containers
marked HDPE, including those that
held milk, juice, cleaners, or other food
items.

NO! Don't recycle these plastic items, no
matter what: Frozen food trays, plastic
cups, toys, cookie trays, motor oil bottles,
lawn chemical bottles, or hazardous
chemical bottles

NO! Glass bottles or jars.
(Glass may be taken to drop-off sites or
placed in garbage)

NO! Lids of any kind. Remove and throw
in garbage.



Bin Replacement

If your recycling bin becomes
damaged or lost, call 444-4500.



Recycling Drop-off Sites

Recycling glass and the occasional
extra bunch of recyclables is easy.
Here are the drop-off sites that serve
the city:

North East: CARE Recycling
4420 IZARD Street
Open: Monday Friday: 7AM 7PM
Weyerhaeuser Recycling
7200 North 16TH Street

South East: River City Recycling
6404 South 60TH Street
(Between Harrison & "Q" Streets)
Open: Monday Friday: 8AM 4:30PM
Saturday: 8AM NOON (Winter)
Monday Saturday: 8AM 4:30PM
(Spring, Summer, Fall)

South West: Firstar Fiber
10330 "I" Street
Open: Monday Friday: 7AM 7PM
Use the East driveway to Firstar.
Turn off I Street, then turn left into
the fenced parking area on your left
before you reach the guard shack.

North West: Scrap Central
8518 Blondo Street
Open: Monday Friday: 9AM 5PM
Saturday: 9AM 3PM

HyVee at Applewood Center
South 96TH & "Q" Streets

Collection Pointers

- Place all materials at your collection point by 6AM.
- If your collection was missed, call 444-5238 after 7PM on your collection day.
- Leave a couple feet of space between your yardwaste, recyclables and garbage containers.
- Keep your garbage dry use plastic bags or trash cans with lids.
- One cap full of household ammonia per garbage container will deter animals from investigating and searching for food in your garbage.
- Use clear trash bags.

Within 5 feet of curb or alley Collection problems: 444-5238

Garbage: Up to 5 containers

Metal or plastic can with handles.
32-gallon, 45-pound max.



Clear plastic.
30-pounds max.
Tie shut.



Recycling: Must use bin

No plastic bags.
No glass.
Paper in paper bag or box.
Flatten cardboard boxes.



Leave space between



Set out by 6AM

Worth Noting

More than a decade after
Omaha dropped its blue-bag
recycling collection program,
Chicago is following suit.
Chicago began its blue-bag
program in 1995. Chicago is the
only remaining city of any size
using the blue-bag collection
system where recyclables and

garbage are collected together
and later separated.

During 2007, Chicago will
convert to a single stream
collection system much like
Omaha. Omaha has been using
green bins for collecting
recyclables since 1996.



Garbage Can Garbage Time

You may not do it not often, but every once in a while a garbage can will need to be thrown away. But how? Because garbage cans come in all shapes, sizes, and conditions and to avoid misunderstandings, Deffenbaugh follows strict procedures for garbage can disposal.

Call Deffenbaugh at 731-3333 and ask for the Claims Office who will work out the details of collecting and disposing of your unwanted garbage

can. The regular collection crews do not collect garbage cans for disposal. The garbage can must be empty when the Claims Office picks it up.



!



Garbage

Collection Missed?
Call 444-5238 after 7PM
on your collection day.

Because of state and federal laws, there are limits to the types of waste you may include in your garbage. Each household is limited to 5 properly prepared trash cans or clear bags of garbage per week.

Yes!



Trash cans up to 32 gallons that weigh up to 45 pounds when full.

Clear plastic bags that weigh up to 30 pounds when full.



Up to 5 containers of garbage per week (example 2 trash cans and 3 bags).

Place within 5 feet of curb, approved alley or other approved location.

No!

A mixture of garbage and yardwaste.

Rocks, dirt and concrete.

Dead animals.

Any liquids.

Loose pet waste or cat litter.

Tires, engines or other large auto parts.

Bulky items (couches, chairs, stoves, etc.).

Dark plastic bags that you can't see through.

Motor oil and automotive batteries.

Cardboard boxes (empty or full) when not in a can or bag.

Items outside a can or clear bag.

Note: Garbage cans must be removed from the curb by 10AM the day after collection.

Quotes Requoted

Source Reduction is to garbage what preventive medicine is to health.

William L. Rathje, PhD
Born 1945
Director of the Garbage Project
Author of *Rubbish!: The Archaeology of Garbage*

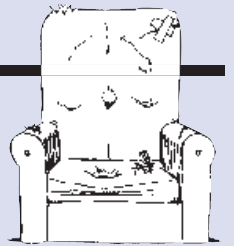


www.wasteline.org

Bulky Item Disposal

There are options for bulky items not permitted through regular collections. Omaha has a low cost, co-pay system for disposal through a local solid waste transfer station.

Call 444-5238 for information. !



10 Tips for a Happier Holiday Season

Beginning with fall football bashes and continuing until Valentines Day, fall and winter are a time for parties, family gatherings, and holiday celebrations. This means more food, more gifts, and more stuff. Here are some tips for a greener, cleaner, and perhaps happier holiday season.

1. Plan your parties with care. Get an accurate head count so that you can prepare enough food, but not too much. If you need help with your calculations, use the party food and beverage calculators at www.greatpartyrecipes.com/partyfoodplanning.html. At the end of the party, send leftover food home with guests in clean, re-useable containers such as butter tubs.

2. Steer clear of disposables whenever possible. Instead of paper tablecloths, paper plates, plastic cups, and plastic flatware, use your own washable tablecloths, napkins, dishes, glassware, and silverware. Don't have enough on hand? Purchase low-cost extras at secondhand stores, borrow from friends or relatives, or rent what you need.

3. Resist the temptation to buy unneeded extras. Your guests will probably enjoy a New Year's Eve party just as much without the plastic party hats. In fact, they may enjoy it more!

If you decide to buy decorations for one of your parties, ask yourself: Will I be able to use these decorations again later? Do I have room to store them? If you answer yes, then shop and enjoy. If you answer no, step back and think about whether you really want them after all. You can create your own decorations with things you already have. Tape together old calendar pages for your New Year's Eve table. Grab footballs and create a pigskin centerpiece for your Super Bowl party.

4. Make it easy for guests to recycle at your parties. Put a recycling container right next to each trashcan. Label the recycling container so the non-recyclers will know what to do!

5. Reduce, reuse, and recycle while you travel. On car trips, pack your own sandwiches and healthy snacks, and bring drinks in reusable or recyclable containers. Many Interstate rest areas have recycling drop-off bins. If you don't see them, simply keep your containers in a bag or box and recycle them when you arrive at your



destination or back at home. On plane trips, look for recycling bins for newspaper and beverage containers in airports. Remember to pack your carry-on bags so that you aren't standing at security throwing things away. Many items that used to be OK in carry-ons are now banned and must

be placed into checked luggage. If you haven't flown in a while, check the current guidelines at www.tsa.gov.

6. Take a long, hard look at your gift list. In some cases, you may be exchanging gifts with people out of a sense of obligation. If you are close to these people, discuss a non-gift alternative, such as doing something fun together in the spring, meeting once a month to catch up, or donating your time together to help someone in need. If people still want something to unwrap, talk about drawing names for a gift exchange. Not close enough to have this discussion? Give something consumable, such as tickets to a movie, museum passes, or tasty food.

7. Give gifts that are thoughtful. A thoughtful gift doesn't have to be

expensive and it doesn't have to be brand-new, but it does need to show that you care about the recipient and the things that make him or her happy. For instance, a movie fan with a collection of old westerns may love to have a used DVD of a hard-to-find classic. For a music buff, a gift certificate from an online music store may be the ideal gift. For the person who has everything, the best gift may be a donation to an organization he or she cares about.

8. Wrap gifts with old maps, colorful magazine pages, fabric scraps, or reused paper and gift bags. Or, better yet, make the wrapping part of the gift. For a gardener, put a trowel and seeds into an empty flowerpot just add a reused ribbon and the gift is "wrapped." Reuse the fronts of last year's holiday or birthday cards as gift tags.

9. Declare a "Buy Nothing Day" (or two)! Devote this day to family and friends. Bake cookies, make your favorite appetizers, or pop some popcorn. Watch football. Learn new board games. Have a movie marathon.

10. Enjoy your time with family and friends! Get-togethers should make everyone feel more connected, rather than more rushed. !

A New Year. Make it a Safe One.

UnderTheSink
Special Waste Facility



Resolve to make your home safer in 2007 by properly disposing of all your unwanted chemicals. **UnderTheSink**, the metro area's household chemical disposal facility, is the way to make this resolution come true, and it couldn't be easier. Better yet, it's free. Simply call 444-sink [444-7465] to make an appointment any Wednesday through Saturday.

Residents of Douglas and Sarpy County can bring in their household chemical wastes for proper disposal free of charge. Your vehicle will be unloaded for you. Now how easy is that!

Please note that **UnderTheSink** can only accept household waste. **UnderTheSink** cannot accept material that is related to a business, even a home-based business, because of disposal regulations.

**UnderTheSink,
DownInTheBasement,
OutInTheGarage,
UpInTheAttic**

No matter where they're stored, household chemicals need to be safely stored, and disposed. These products need special attention when disposing so that plants, animals, people, soil, water and air are protected.

UnderTheSink is able to dispose of nearly all unwanted household chemicals, things that are typically labeled with any of the following words:

- ▶ Caution
- ▶ Warning

Fast Facts

Location:
4001 South 120 Street

Appointments:
Call 444-sink [444-7465]

Cost:
Free

Website:
www.underthesink.org

- ▶ Danger
- ▶ Poison
- ▶ Flammable
- ▶ Volatile
- ▶ Caustic
- ▶ Corrosive.



UnderTheSink can also dispose of fluorescent tubes, used motor oil, and hypodermic needles. The few items **UnderTheSink** doesn't accept are: ammunition, explosives, appliances, asbestos, radioactive material, tires or infectious waste.

If you only need to dispose of latex paint, which is not a hazardous chemical, consider drying out the paint and disposing with



UnderTheSink fun facts:

In less than 18 months, **UnderTheSink** has:

- ▶ Collected over 1 million pounds of household chemicals.
- ▶ Recycled over 180,000 pounds of steel paint cans.
- ▶ Recycled over 19,000 pounds of automobile batteries.
- ▶ Re-used 2,000 gallons of antifreeze in City of Omaha vehicles.
- ▶ Re-used 30,000 gallons of latex paint to cover graffiti.



your household garbage. Helpful instructions on how to quickly dry out paint are available at www.UnderTheSink.org.

Something for Nothing

Visit **UnderTheSink's** ReStore to pick up some partially used containers of common household products. Best of all, everything is free at the ReStore. The "inventory" fluctuates so you may not find what you need in just one trip. By state law, the ReStore shelves can't distribute pesticides or herbicides but many other products are available including:

- ▶ Paint, stain and paint related products
- ▶ Automotive products
- ▶ Household cleaners
- ▶ Drain cleaners

- ▶ Wallpaper paste and wallpaper remover
- ▶ Wood fillers and drywall repair products



UnderTheSink opened in June 2005 and is owned and operated by the City of Omaha, for the benefit of all residents in Douglas and Sarpy Counties. **UnderTheSink** has received significant grant funding for its construction and operation. Grants for construction were provided from (in order of grant size) Nebraska Environmental Trust, Nebraska Department of

Environmental Quality, Peter Kiewit Foundation, Papio-Missouri River Natural Resources District, and Omaha World-Herald Foundation. The Nebraska Department of Environmental Quality provided a five year grant to assist in operation. **!**

Cleaning up the Gulf Coast

Late last summer, Hurricanes Katrina and Rita hit the Gulf Coast with a one-two punch. In their wake, were 300,000 displaced Americans and 75 million cubic yards of waste. This debris, the equivalent of 30 years worth of waste in the Gulf Coast region, included about 350,000 flooded vehicles and at least 25 million cubic yards of green waste (tree limbs, trunks, leaves, and dead bushes).



Much of this debris will be landfilled. However, the automobiles and large appliances will be recycled in large numbers. After the first six months of cleanup, about 280,000 tons of steel had already been recycled. Meanwhile, smaller scale efforts are gathering plumbing fixtures, cypress wood, and doors to be reused.

Of particular concern during cleanup is the huge quantity of

hazardous waste "orphaned" by the storm, including household hazardous waste. By February, 2 million containers of hazardous waste, a total of more than 10 million pounds, had been collected. Of these, 1.9 million were small containers, many of which were flood-damaged household hazardous materials collected by crews going house to house or dropped off at collection centers by residents.

Preparing your home and family for potential disasters helps minimize waste. For details, visit www.ready.gov. **!**